

EMORY



Emory University
Ebola Biosafety and Infectious Disease
Response Training UH4 Program

Presenter
Alexander Isakov, MD, MPH



Aims

- Partner with the NIEHS-WTP to:
 - Disseminate an environmental infection control and hazard recognition education and training program aimed at workers who may be at risk for exposure in the workplace
 - **Emergency responders**
 - **Front-line healthcare workers**
 - **Public health practitioners**
 - Establish an enduring platform for collaboration with regional and national partners that facilitates dissemination of safety and health education and training for workers that can be delivered both proactively by way of a standing program as well as contemporaneously by way of “just-in-time” training

EMORY



Geography

- Primary target region – ASPR Region 4
 - Alabama, Florida, Georgia, Kentucky, Mississippi, North Carolina, South Carolina and Tennessee
- National reach via distance learning platform and Train-the-Trainer strategy

EMORY



Collaborators

- Emory University
 - School of Medicine
 - School of Nursing
 - School of Public Health
 - Office of the Provost
 - Office of Environmental Health and Safety
 - Office of Critical Event Preparedness and Response
- HHS/ASPR Region 4 Ebola Treatment Center - Emory University Hospital Serious Communicable Disease Unit
- HRSA Region 4 Public Health Training Center
- National Ebola Training and Education Center

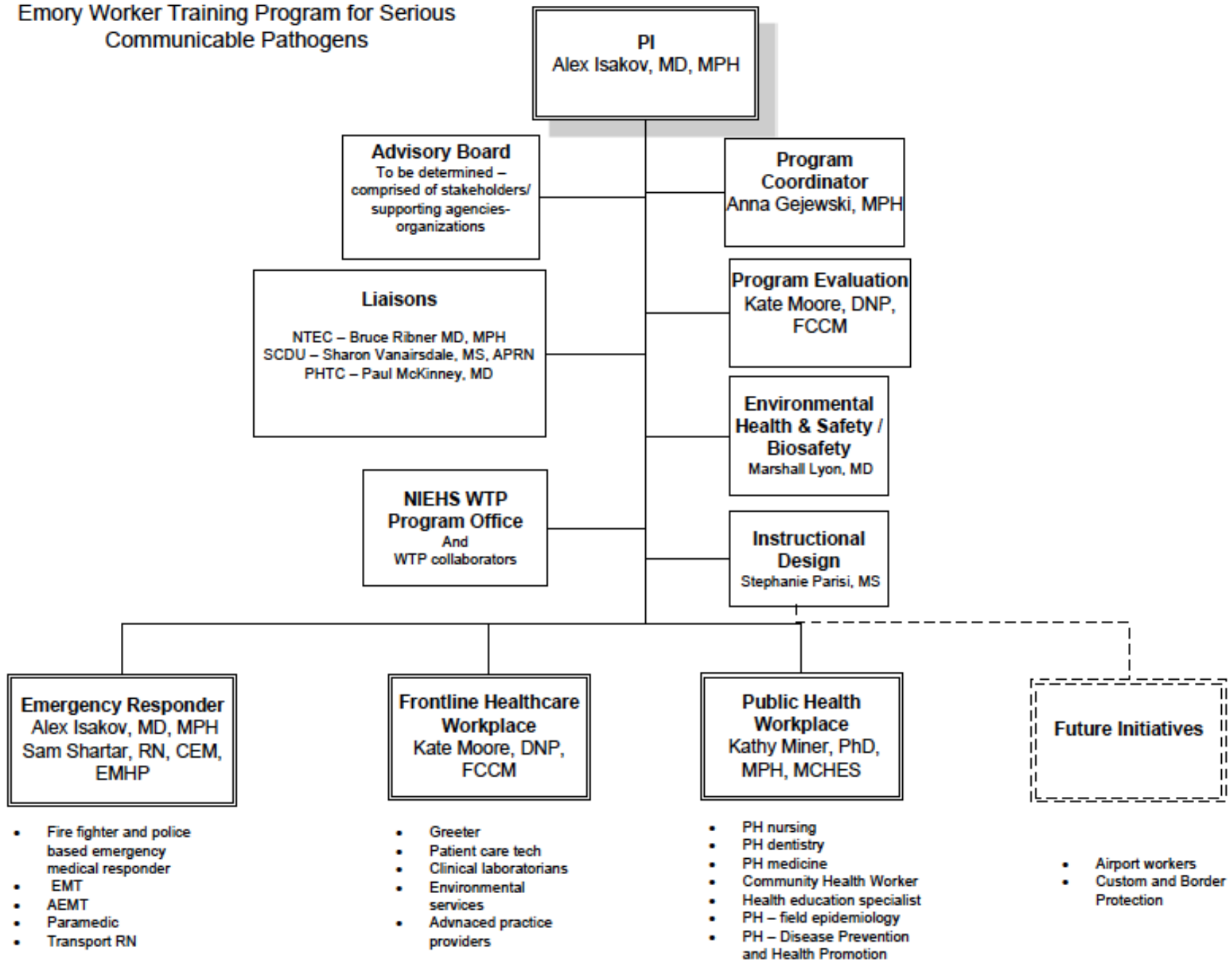
EMORY



Strategic Partners

- HHS Region IV ESF8 Unified Planning Coalition
- Georgia Department of Public Health
- National Association of State EMS Officials
- National Association of Emergency Medical Technicians
- National Association of EMS Physicians
- International Association of EMS Chiefs
- Air and Surface Transport Nurses Association
- American College of Emergency Physicians
- Emergency Nurses Association
- Elizabeth R Griffin Foundation
- American Medical Response
- Air Methods Corporation

Emory Worker Training Program for Serious Communicable Pathogens





Brief past performance

- Healthcare workplace
 - August 2014 – September 2015
 - 700 personnel trained on proper triage, isolation, assessment and initial management of patients presenting with possible exposure to Ebola
 - On-line Ebola education site had over 30,000 registrations for access
- Emergency Responder Workplace
 - August 2014- September 2015
 - 230 paramedics and EMTs trained at the operator level
 - COCA webinar – EMS and Ebola: Field Experience with Transporting Patients – 1200 learners
- Public Health Workplace
 - Region IV Public Health Training Center
 - Over 3000 workers in public health professions accessed awareness education material in the first year of operations

EMORY



Course overview

- Emergency Responder Operator Course
 - Education about serious communicable pathogens
 - Epidemiology of illness
 - Microbiology of pathogens
 - Methods of acquisition/transmission
 - Natural disease course
 - Incubation
 - Signs and symptoms
 - Transmission
 - Recovery
 - Preventing transmission/infection control
 - Treatment
 - Vaccine/prophylaxis



Course overview

- Emergency Responder Operator Course
 - Operational planning and procedures
 - Clinical care guidelines
 - Crew composition and roles
 - Vehicle preparation
 - Special equipment
 - PPE – selection, donning, doffing
 - Decontamination and disinfection procedures
 - Waste management
 - Partnership with receiving facilities
 - Post-mission surveillance
 - Psychomotor skills based competencies
 - Donning and doffing of PPE
 - Donning and doffing of ambulance/transport vehicle

EMORY



Training and Education Activities

- Webinars
- Interactive lectures (in-person or archived)
- Virtual skill based training
- Skill based training
- Principles of Adult Learner
- Train-the-trainer
- Master Trainer Network



Evaluation

- Level 1 – Reaction
 - Measure of learner satisfaction
- Level 2 – Learning
 - Degree to which knowledge was acquired and skills were added or improved
- Level 3 – Behavior
 - Change in on-the-job behavior or transfer of learning in training to performance
- Level 4 – Results
 - Is the workforce better prepared than prior to training



Evaluation

- Level 1 – Reaction
 - Measure of learner satisfaction
- Level 2 – Learning
 - Degree to which knowledge was acquired and skills were added or improved
- Level 3 – Behavior
 - Change in on-the-job behavior or transfer of learning in training to performance
- Level 4 – Results
 - Is the workforce better prepared than prior to training

EMORY



Strengths

- Multi-disciplinary team from medicine, nursing, public health, environmental health and safety, hospital/health system, EMS, public safety and emergency management and academic institutions
- Strong regional and national partnerships with professional associations and industry
- Strong interface with education and training activities at the National Ebola Training and Education Center
- Strong interface with practitioners
- NIEHS-WTP network

EMORY



Questions?