

# Vision for Building Collaboration for Addressing Addictions in the Workplace: Nashville

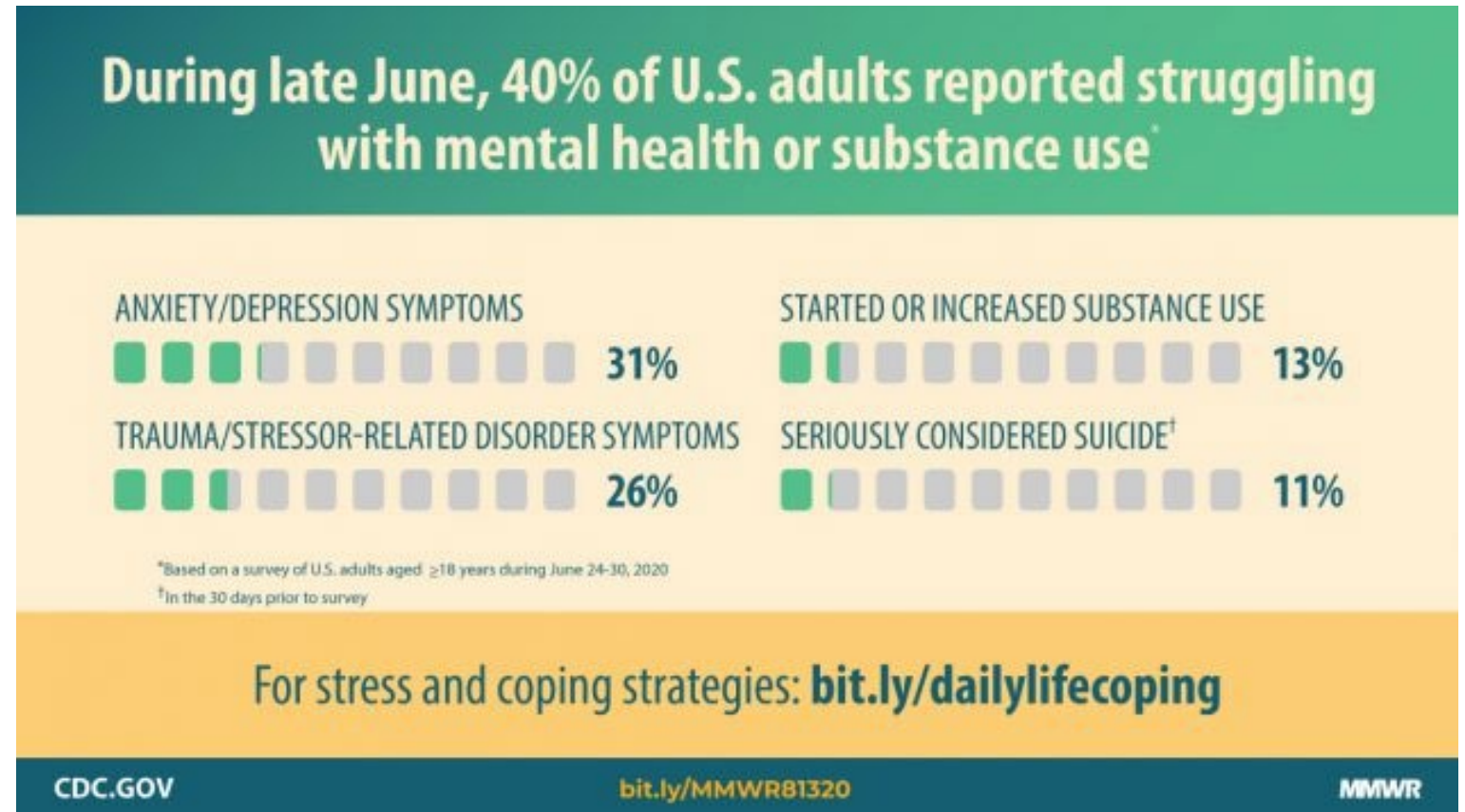
**Art Lee, MD**

**Fisk University ([www.fisk.edu](http://www.fisk.edu))**

**Fisk Community Environmental Toxics Awareness and Sustainability Program**

Impact of Covid-19 on existing problems of Substance Use

Urgency of Action



# Integrated Care Model

Involves improving thriving where people:

- Live
- Work
- Learn
- Worship
- Play

Initial Conversations  
occurring with  
these Key  
organizations  
committed to  
Integrated Care

**1. Nashville Health Disparities Coalition.**  
(<https://nhdcwebsite.wixsite.com/website>)

To empower community members in priority population groups to seek better health, help change local healthcare practices, and mobilize communities to implement evidence-based public health programs to reduce health disparities across a broad range of conditions.

**2. Fisk Community Environmental Program**

Goal: To improve and protect the environmental health of vulnerable populations while building sustainable communities.

**3. Meharry Medical College** ([home.mmc.edu](http://home.mmc.edu))

Meharry Medical College is a global academic health sciences center advancing health equity through innovative research, transformative education, exceptional and compassionate health services and policy-influencing thought leadership.

Initial Conversations  
occurring with  
these Key  
organizations  
committed to  
Integrated Care

**4. Knowles Assisted Living.**

(<https://knowlesassistedliving.org/>).

Wellness, health care, environment, arts, and humanities, and lifelong learning (WHEAL) is a model of service that encourages even the most compromised mature adult to embrace whatever activity is available to promote independence, me, and a sense of purpose and meaning.

**5. Jefferson United Merchants Partnership (JUMP).**

<https://www.facebook.com/JUMPNashville>

JUMP is committed to developing and promoting cooperative economic development, revitalization, education and public safety programs in in North Nashville.

# Examples of Key Academic Centers, Community Organizations, and Agencies in Our Network

- **Vanderbilt University, Meharry Vanderbilt Alliance.** (<https://www.meharry-vanderbilt.org/>)

The Meharry-Vanderbilt Alliance develops and supports collaborative initiatives. It has provided opportunities for collaboration between Meharry Medical College and Vanderbilt University Medical Center, and for collaboration with projects in the community.

- **Nashville General Hospital at Meharry.** (<https://nashvillegeneral.org/>)

Our culture is built on the promise of true patient-centered care — making high quality healthcare accessible to all.

- **CHEN: Congregational Health and Education Network.** <https://nashvillegeneral.org/resources/chen>.

Mission: To mitigate the outcomes of the health disparities within faith-based organizations, through addressing the social determinates of health, primarily focusing on education attainment.

- **Gideon's Army.** (<https://www.facebook.com/GideonsArmyUnited>)

Our mission is to act collectively, boldly and strategically as a unified force for all children. We eliminate the root causes of the prison pipeline, save our children from death and incarceration and guide them on a secure path to success.

# Examples of Key Academic Centers, Community Organizations, and Agencies in Our Network, Con'td

- **Matthew Walker Comprehensive Health Center** ([www.mwchc.org](http://www.mwchc.org))  
Make Easy Access to Quality Care a Reality for Someone in Our Community
- **Interdenominational Minister's Fellowship**(<https://www.imfnashville.org/>)  
The purpose and mission of IMF when we started was to provide an Interdenominational Bridge which would bring about a UNIFIED COOPERATIVE CHRISTIAN LEADERSHIP CADRE...to become a BELOVED COMMUNITY
- **Nashville Health Department Community Health Assessment.**  
(<https://www.nashville.gov/Health-Department/Data-and-Publications/Community-Health-Assessment.aspx>)
- **Tennessee State University** <https://www.tnstate.edu/>  
Tennessee State University aspires to be the premier public urban, comprehensive institution achieving prominence through innovation and instruction, research, creativity, and service with the dissemination of knowledge and information.

# A vision for a community coalition

- Promote health, wellness, safety
- Address inequities
- Address stigma and discrimination
- Access to healthcare, employment, housing
- Access to treatment and recovery resources
- Establish a peer network
- Establish community health worker network
- Expand resources for training, employment, and research



Questions at the end?