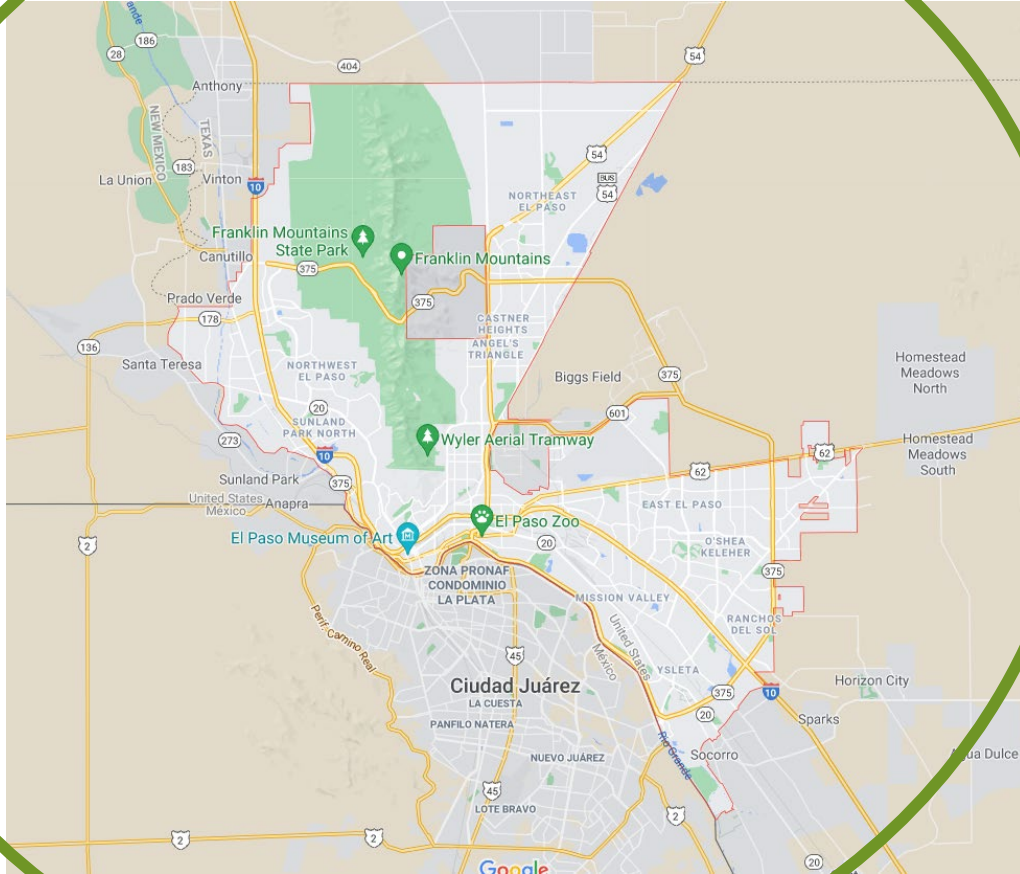


El Paso COVID-19 Recovery Training

P2R CONSORTIUM

NIEHS WTP GRANT NO. U45ES019360



TourTexas.com
copyright 1996

El Paso County

Population : Almost 840,000

Hispanic descent: 83%

Median home value: \$121,500

Median household income: \$46,871

Persons in poverty: 18.8%

Education, persons age ≥ 25 years:

- HS diploma: 78.5%
- Bachelor's degree: 23.3%

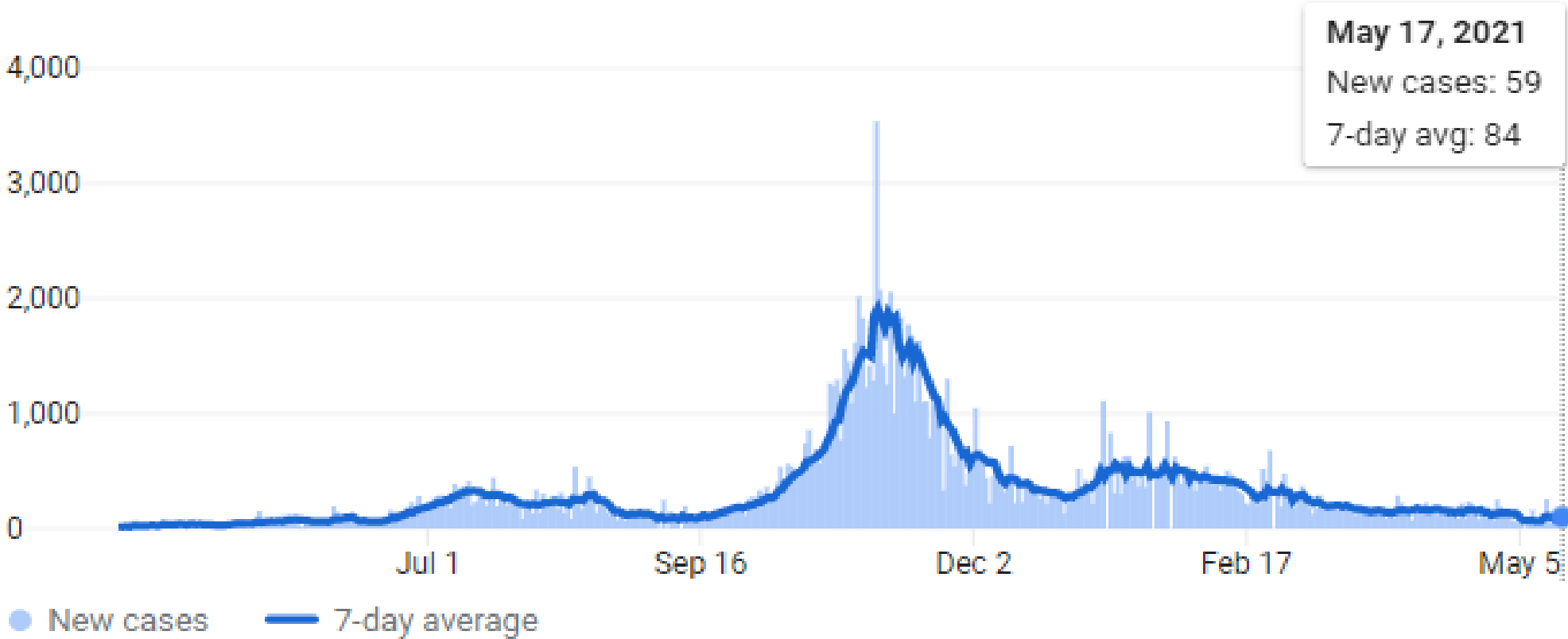
Housing:

- Median gross rent: \$838
- Median home value: \$121,500

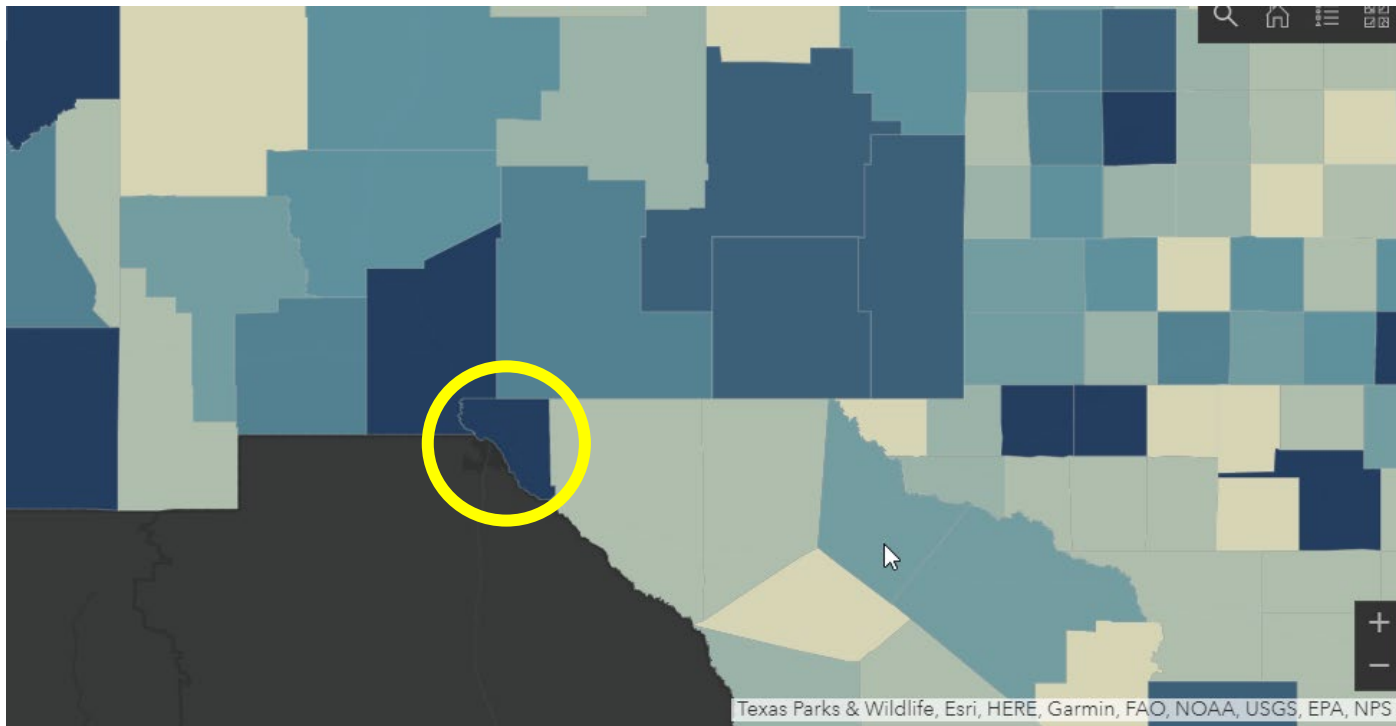


Census Quick Facts, ~2019

COVID-19 Cases



COVID-19 Deaths



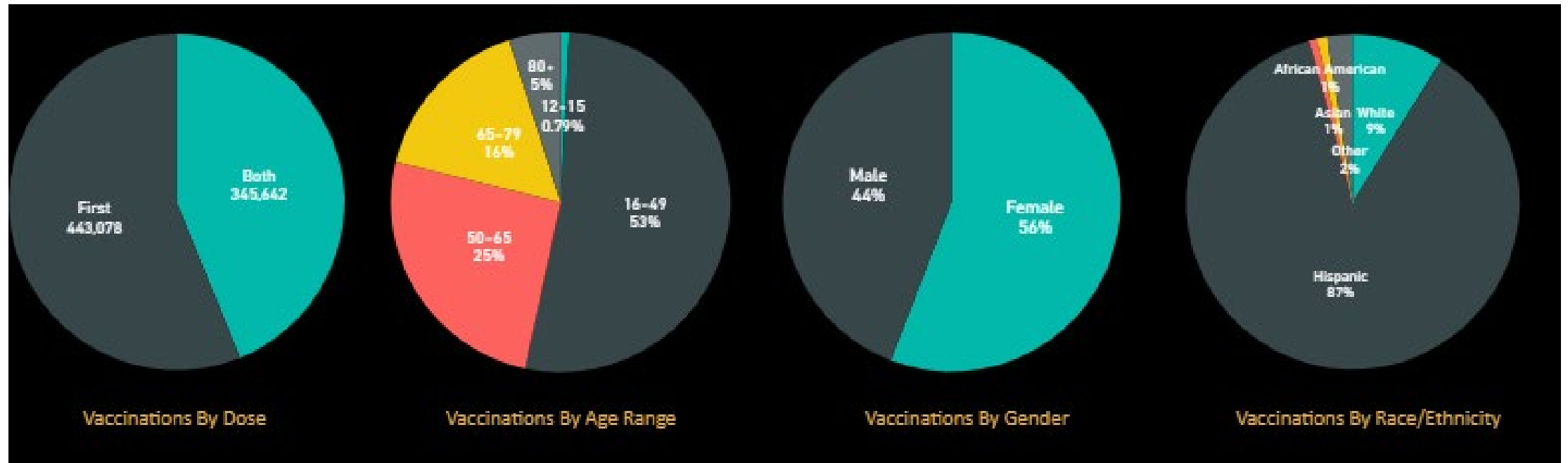
El Paso County:

Total deaths, 12/1/2020 –
5/18/2021: 2,596

Yesterday's reported deaths,
5/18/2021: 2

COVID-19 Vaccinations

Total vaccinations administered: 767,623



Project At A Glance

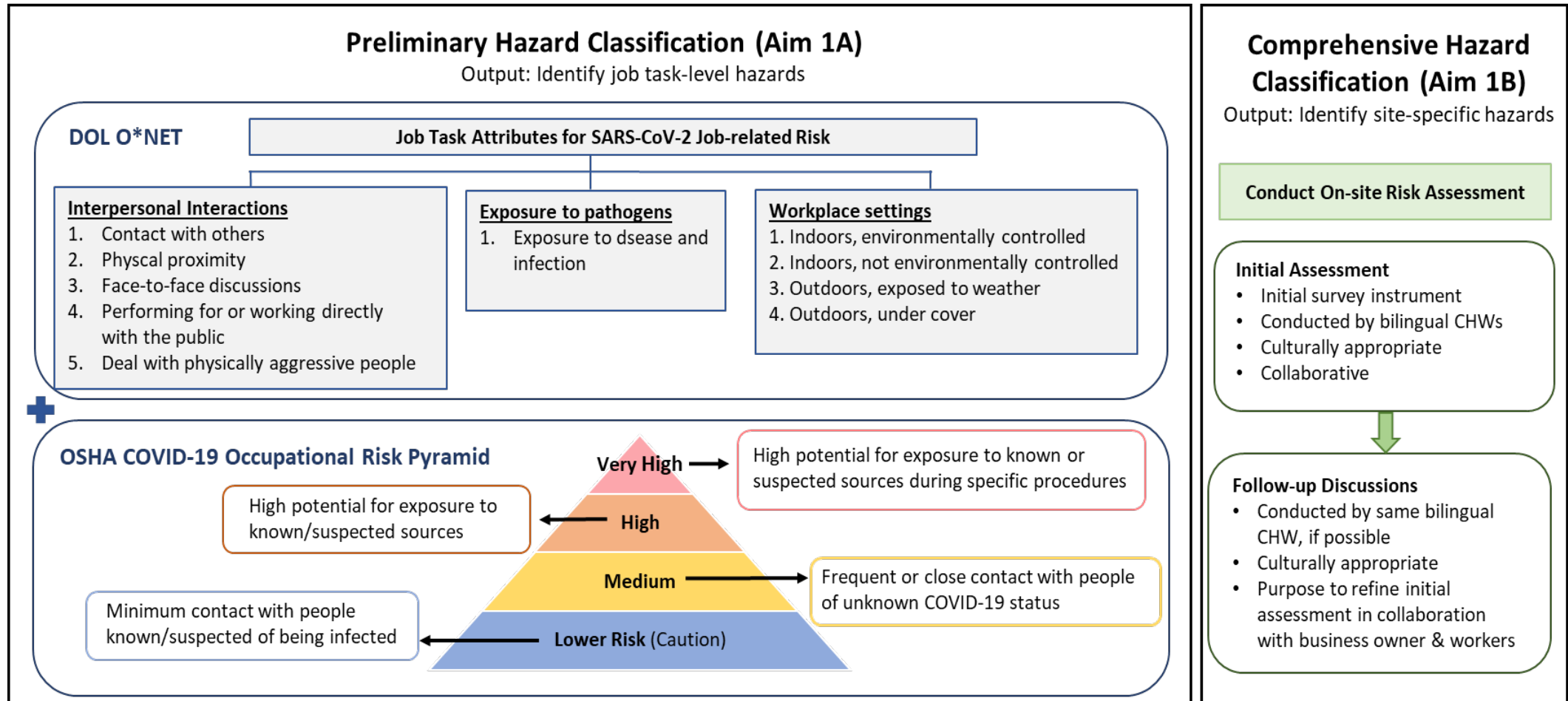
Overall objective: To deliver actionable, site-specific training in COVID-19 mitigation strategies to vulnerable populations in El Paso County

Partners: El Paso Hispanic Chamber of Commerce, University Medical Center of El Paso, El Paso Water

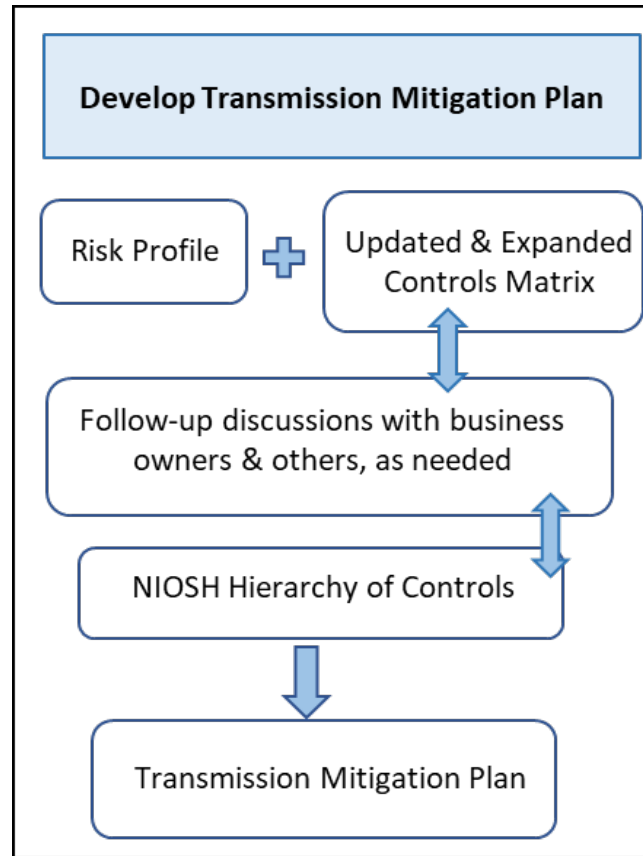
Aims:

1. Expand and refine a COVID-19 risk profile tool that will calculate a site-specific risk profile for workers by job classification and task.
2. Create an individual and actionable SARS-CoV-2 transmission mitigation plan in English and Spanish.
3. Deliver high quality, culturally appropriate training and resources to mitigate workplace transmission.

Aim 1: Expand & refine risk profile tool



Aim 2: Create transmission mitigation plans



Aim 3: Deliver training & resources

Deliver resources to community

- 1 Bilingual community health workers will deliver site-specific transmission mitigation plans, supplemental resources (PPE, disinfection kits), and connections to other resources to business owners.
- 2 Project team will deliver risk reduction training and resources to El Paso Water, University Medical Center of El Paso, the El Paso Hispanic Chamber of Commerce, and others in the community.
- 3 Evaluate the development of transmission mitigation plans and delivery of resources.

Adding
vaccination
education

The Project Team

Janelle Rios, PhD, Principal Investigator, Director of P2R Consortium – Manage the preparation and execution of all project activities as well as the administration of the grant, co-leading Aim 2

Kristi Mena, PhD, Co-Investigator, Dean of UTHealth SPH El Paso Campus – Oversee coordination of assessment activities and training events and work with community leaders in El Paso, co-leading Aim 2

Sadie Conway, PhD, Occupational Epidemiologist – Develop courses and lead Aim 1

Louis Brown, PhD, Co-Investigator – Program evaluation

Denise Vasquez, MPH, Research Coordinator – Organize community health workers, lead Aim 3

Sylvia Hernando, UTHealth SPH Community Health Worker

Holly Cieslikowski, Project Specialist – Develop and edit course content

Pamela Phillips, Program Coordinator – Logistics

SoYoung Kwon, PhD, Instructional Developer and e-Learning Specialist – Course development and coordination

THANK YOU NIEHS!